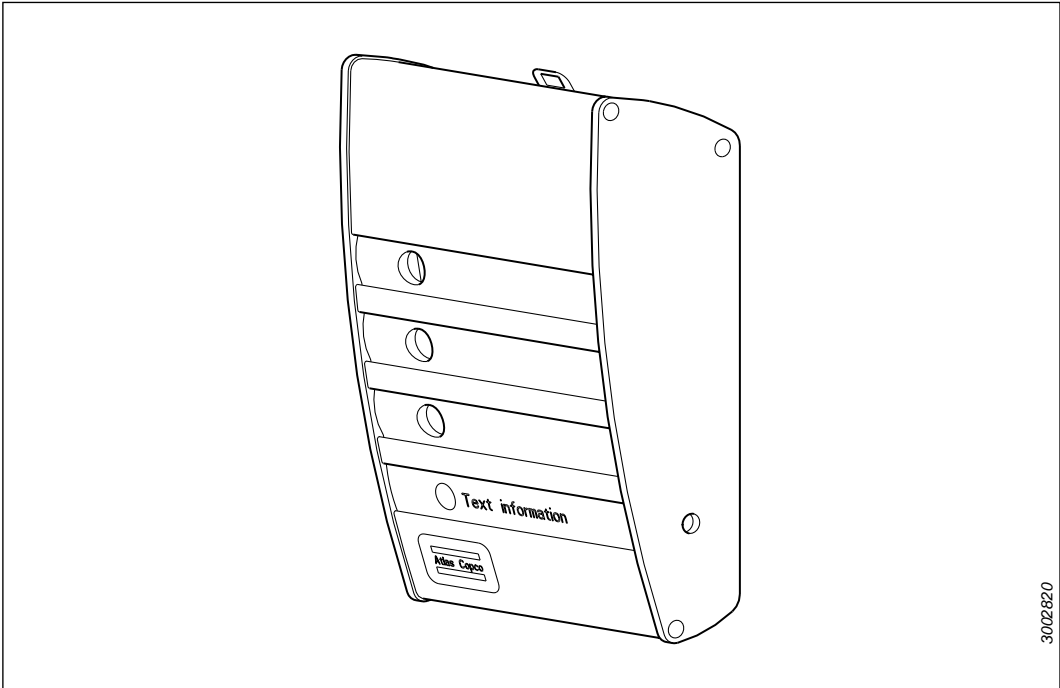


Re- alarm



ENGLISH — Pictograms

WARNING – It can be dangerous to use this machine if the operating instructions are not carefully followed.



Before using the machine, please read the instructions supplied carefully and keep them safe for future reference.

ENGLISH

Operator's Instructions
Spare Parts and Accessories Ordering No.s

Pages 2-6
Page 6

Technical specifications

Over all dimensions

Length	195 mm
Width	116 mm
Height	58 mm

Weight

920 g

Power consumption

95 mA CAN bus
145 mA Ext. 24V

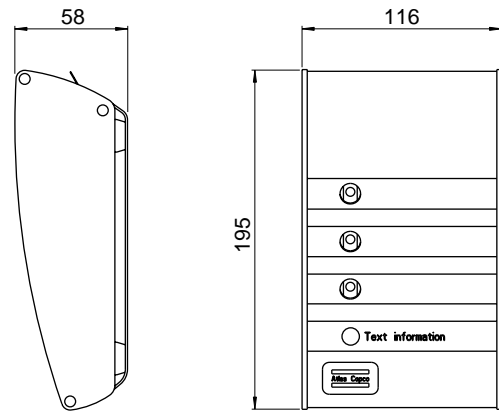
Operating voltage

10-24 VDC

Operating conditions

Temperature	0-50°C (32-122°F)
Humidity	5-95% non-condensing

Dimensional drawing



3002800

Introduction

The Re-alarm is designed to make it possible to remote indicate status of tightenings. It is easily connected to the I/O-port on the Tensor DS D312 or PF3000 Controller. No adapter cable is needed, only the communication cable 4222 0470 .. and termination 4222 0443 00.

The Re-alarm will not work with PF2000 or Tensor DS D302.

Re-alarm

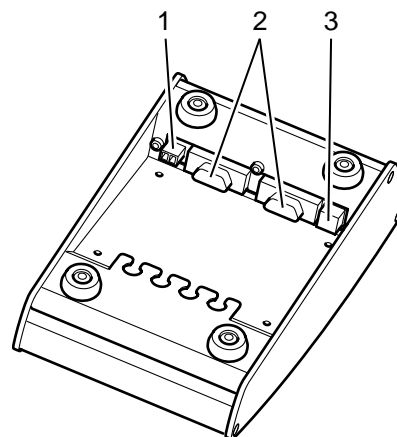
Installation

When installing the Re-alarm please follow instructions below.

Connectors

Ref. No.	Description
1	+24 VDC input
2	I/O -Bus cable/Termination
3	Hex switch

Fig. 1



Power supply

The Re-alarm is powered from the DS drive or PF3000 through the I/O-Bus cable. The maximum current output from the DS/PF3000 is 800mA.

If there is additional equipment connected to the DS/PF3000 which together with the Re-alarm consumes more than 800mA it is necessary to have external power supply. External power to the Re-alarm is connected on position 1 in Fig. 1, named "ext 24 VDC Input".

Note: External Power supply used, has to be isolated and apply to National standards.

Hex Switch

There is a hex switch on the Re-alarm (Fig. 1/Ref. No 3).

Turn the switch to the right number/letter. The number indicates the node address on the I/O-bus.

When delivered it is pre-set to 3.

For Tensor DS this should not be changed.

For PF3000, please read PF 3000 manual for detailed information.

Settings on Hex switch

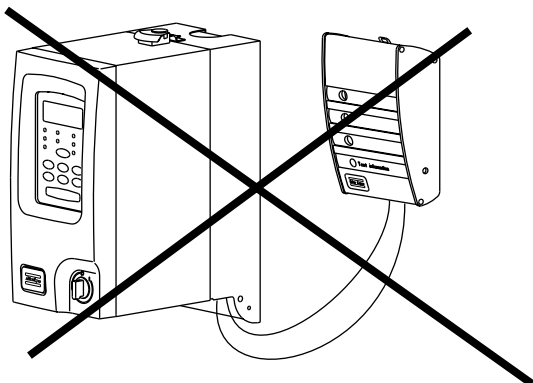
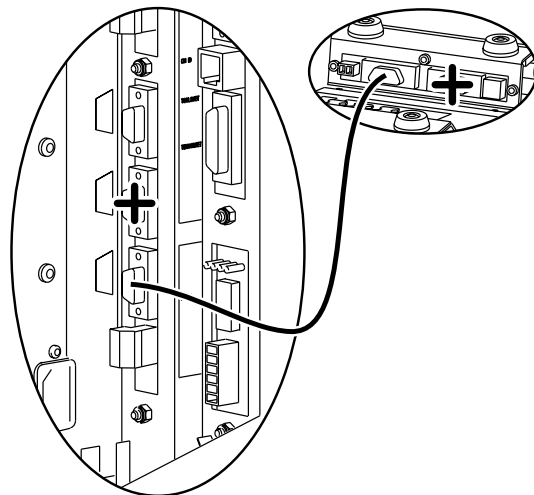
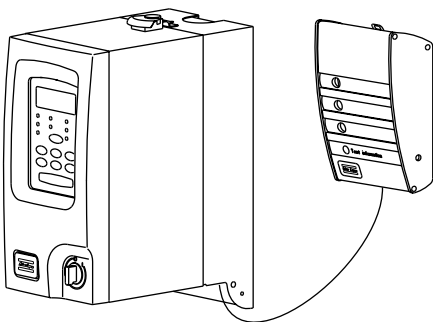
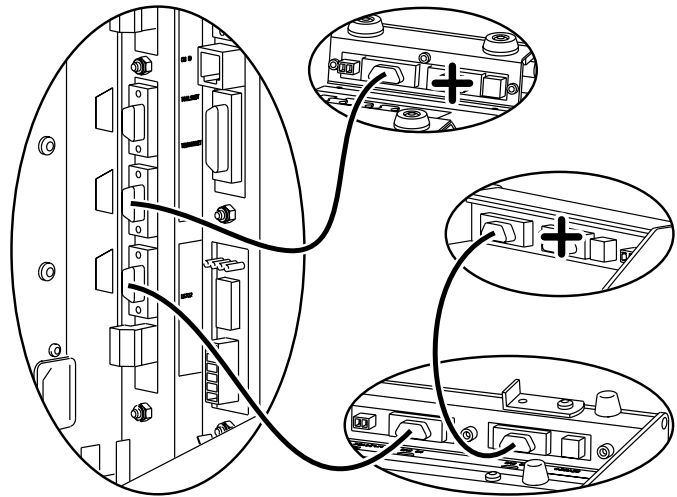
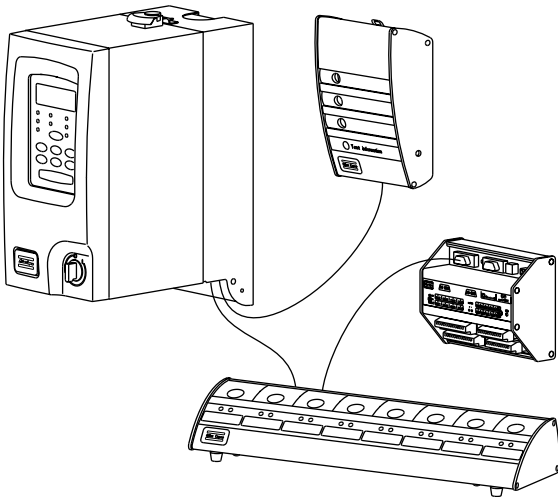
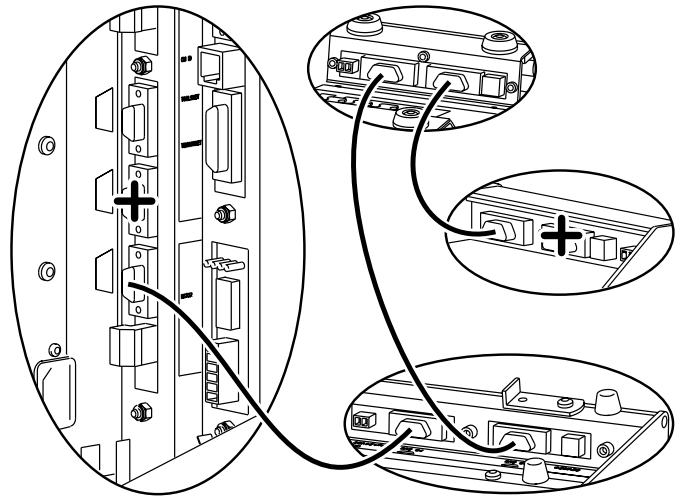
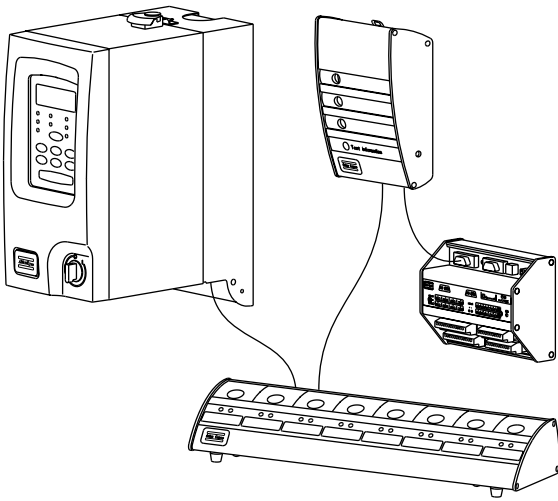
POS.	NODE ADDRESS
0	Internal relay in PF3000. Not used
1	1
2	2
3	3
4	4
5	5
6	6
7	7
8	8
9	9
A	10
B	11
C	12
D	13
E	14
F	15

Connectors and cables

On the Re-alarm there are two connectors for the I/O-bus. Both of these has to be connected. The drive is also equipped with two connectors for the I/O-bus, which have to be connected as well. Every connector in the system has to be connected, either by a cable, 4222 0470 xx (See page 6) or a termination, 4222 0443 00. Two termination plugs are included on delivery. Fig. 2 shows how the I/O-bus accessories shall be connected.

3002830

Fig. 2 Connections



+ = Termination
 ~~~~~ = Cable

3002810

## Re-alarm

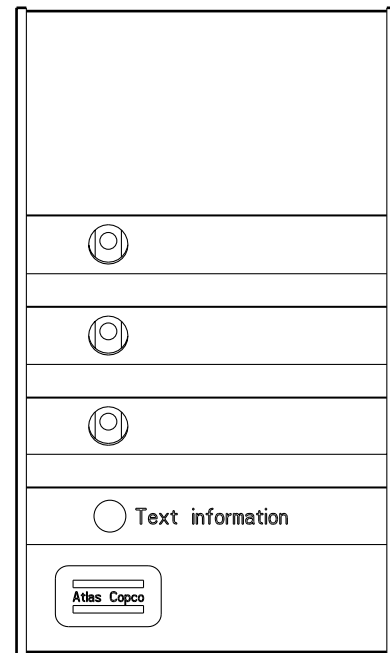
### Leds

There are 4 leds indicating light when an action is activated.

It's possible to choose from a lot of alternative labels with different text and colorfilters.

| Text            | Colorfilter |
|-----------------|-------------|
| OK              | Green       |
| n x OK          | Green       |
| Job OK          | Green       |
| Line Control OK | Green       |
| NOK             | Red         |
| Job NOK         | Red         |
| High            | Red         |
| High Torque     | Red         |
| High Angle      | Red         |
| Low             | Yellow      |
| Low Torque      | Yellow      |
| Low Angle       | Yellow      |
| Alarm           | Orange      |
| Stat Alarm      | Orange      |
| CCW Direction   | Orange      |
| CCW Position    | Orange      |
| Running CCW     | Orange      |
| Tool Locked     | Orange      |
| Blank           | Yellow      |
| Blank           | Orange      |
| Blank           | Red         |
| Blank           | Green       |
| Coverplate      | Black       |

Fig. 3

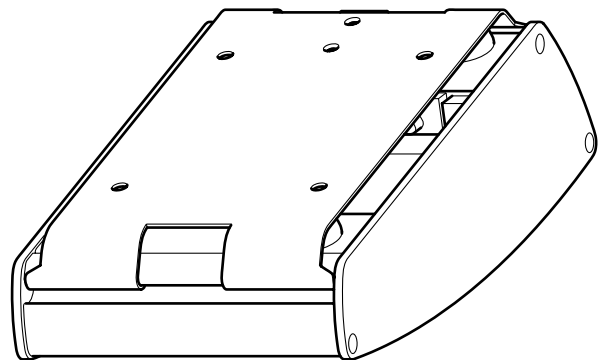


3002840

### Mounting

The Re-alarm can be placed on a table or mounted at a wall with the wallbracket (see Fig. 4).

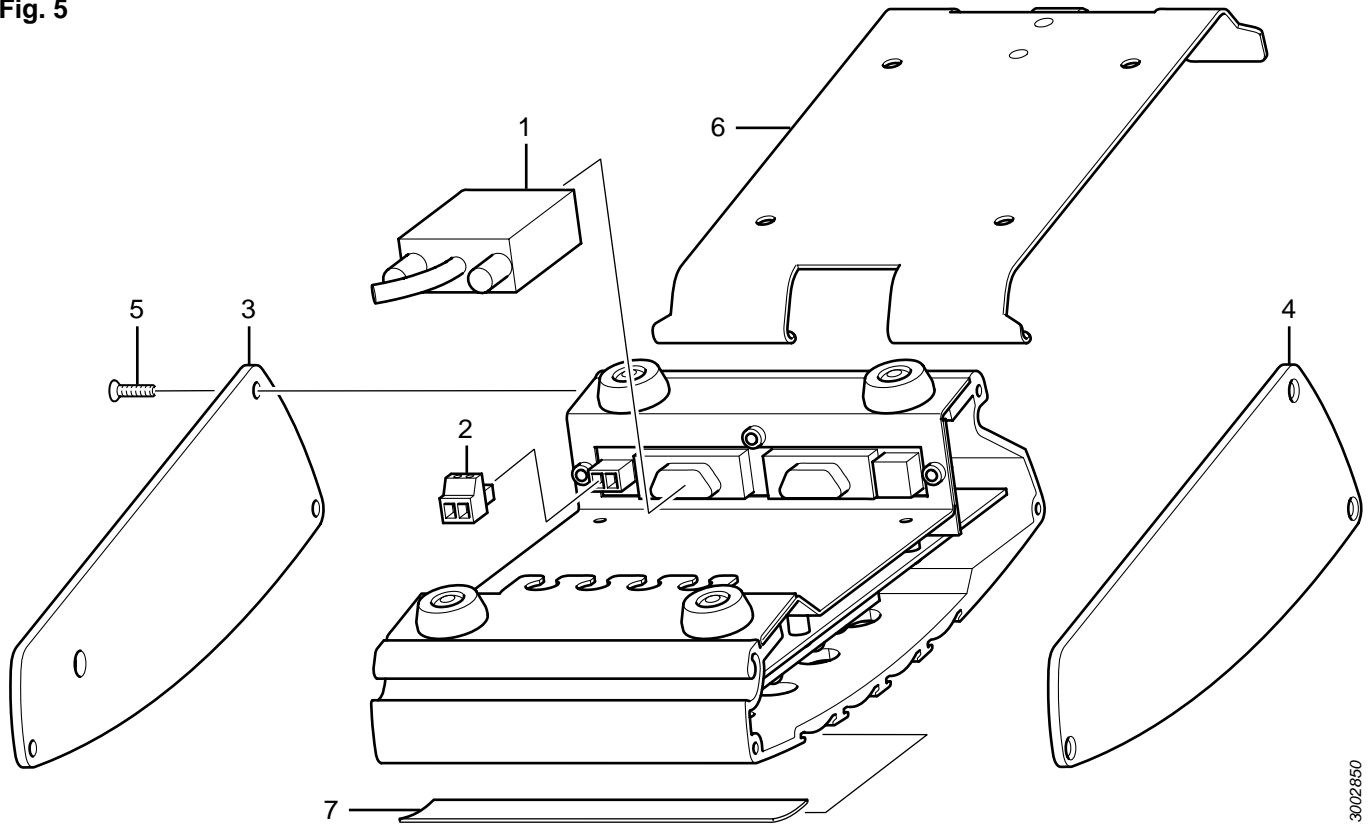
Fig. 4



3002860

Spare parts & accessories

Fig. 5



3002850

| Ref. No. | Ordering No. | NB | Qty | Description                                              |
|----------|--------------|----|-----|----------------------------------------------------------|
| 1        | 4222 0443 00 | 1  | 1   | I/O-bus termination                                      |
| 2        | 4222 0732 02 | 1  | 1   | 2-p Screw connector<br>(Phoenix MCVR<br>1.5/02 -ST-3.81) |
| 3        | 4222 0606 04 | 1  | 1   | Right Endplate with filter                               |
| 4        | 4222 0606 03 | 1  | 1   | Left Endplate                                            |
| 5        | 0219 1100 14 | 6  | 6   | Screw (MFTS M3x12<br>Black chrome)                       |
| 6        | 4222 0632 80 | 1  | 1   | Wallbracket                                              |
| 7        | 4222 0606 03 | 1  | 1   | Label (see also<br>Alternative labels)                   |

Cables available

| Ordering No. | Description |
|--------------|-------------|
| 4222 0470 00 | 0.5 meter   |
| 4222 0470 01 | 1 meter     |
| 4222 0470 02 | 2 meter     |
| 4222 0470 03 | 3 meter     |
| 4222 0470 05 | 5 meter     |
| 4222 0470 15 | 15 meter    |

Alternative labels

| Ordering No. | Qty. | Text            | Colorfilter |
|--------------|------|-----------------|-------------|
| 4222 0657 01 | 1    | OK              | Green       |
| 4222 0657 02 | 1    | n x OK          | Green       |
| 4222 0657 03 | 1    | Job OK          | Green       |
| 4222 0657 04 | 1    | Line Control OK | Green       |
| 4222 0658 01 | 1    | NOK             | Red         |
| 4222 0658 02 | 1    | Job NOK         | Red         |
| 4222 0658 03 | 1    | High            | Red         |
| 4222 0658 04 | 1    | High Torque     | Red         |
| 4222 0658 05 | 1    | High Angle      | Red         |
| 4222 0659 01 | 1    | Low             | Yellow      |
| 4222 0659 02 | 1    | Low Torque      | Yellow      |
| 4222 0659 03 | 1    | Low Angle       | Yellow      |
| 4222 0660 01 | 1    | Alarm           | Orange      |
| 4222 0660 02 | 1    | Stat Alarm      | Orange      |
| 4222 0660 03 | 1    | CCW Direction   | Orange      |
| 4222 0660 04 | 1    | CCW Position    | Orange      |
| 4222 0660 05 | 1    | Running CCW     | Orange      |
| 4222 0660 06 | 1    | Tool Locked     | Orange      |
| 4222 0661 01 | 2    | Blank           | Yellow      |
| 4222 0661 02 | 2    | Blank           | Orange      |
| 4222 0661 03 | 2    | Blank           | Red         |
| 4222 0661 04 | 2    | Blank           | Green       |
| 4222 0662 00 | 2    | Coverplate      | Black       |